



## DIPAC 2011 INDUSTRIAL EXHIBITION

16-17 May 2011, Hamburg, Germany

Dear Industrial Exhibitor,

Herewith I send you some information concerning the course of the DIPAC 2011 industrial exhibition in Hamburg together with some general information about the location and infrastructure.

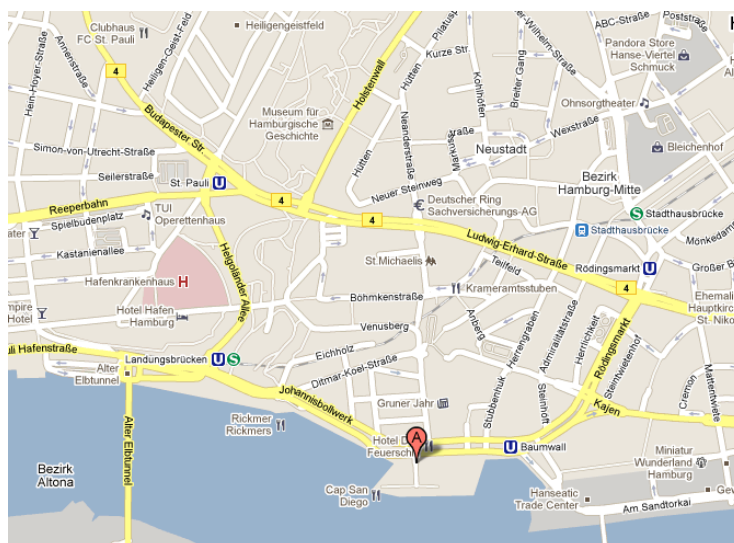
In case of questions please do not hesitate to contact me (email: [gero.kube@desy.de](mailto:gero.kube@desy.de)).

Yours faithfully,

Gero Kube

### 1.) How to reach the Cap San Diego

The conference will take place aboard the museum freighter 'Cap San Diego' (<http://www.capsandiego.de>) which anchors at the Überseebrücke quay in the center of Hamburg harbor. A map of this area is shown below.



Further travel information about Hamburg in general and maps can be found following the link <http://www.hamburgtravelguide.com/hamburg-museums-cap-san-diego.html> .

At the conference web site <http://dipac2011.desy.de/e102329> a description of how to reach the conference location can be found if you are arriving by train or by plane. If you are coming by car you have to take into account that it is not possible to drive up to the Cap San Diego. For long-time parking we recommend to use the underground car park „Am Michel“ in the street *Schaarsteinweg* (distance to the anchorage ground about 300 m), or to use the underground car park „Vorsetzen“ directly underneath the harbor promenade. For unloading your equipment it is in principle possible to drive up to the Cap San Diego for cars with maximum height of 2.10 m and with maximum weight of 2.5 t. However, in this case a formal approval is required from the port authority. If you plan to apply for such approval please contact our conference secretary Mrs. Helga Ahluwalia in advance ([Helga.Ahluwalia@desy.de](mailto:Helga.Ahluwalia@desy.de)).

Exhibitors planning to travel with heavy or cumbersome equipment should keep in mind also the transport of their equipment aboard (steep gangways, see picture below). If you feel that you need support please contact us in advance, it might be necessary to organize a winching of your equipment aboard (email: [gero.kube@desy.de](mailto:gero.kube@desy.de)). Winching can be done in principle, but only at specific times and for a restricted time period. In this case your equipment should be packed impervious to rain. The crew of the Cap San Diego and the conference organization team will not be responsible for the exhibitor's equipment.



## 2.) Accommodation

A list of recommended hotels can be found from the conference web site following the link <http://dipac2011.desy.de/e102329>.

Please keep in mind that for each sponsor we are glad to offer the special possibility of renting a single (or double) cabin during the workshop aboard the Cap San Diego, and to enjoy the unique maritime atmosphere in the center of Hamburg harbor (for additional information see [http://www.capsandiego.de/Uebernachten/Uebernachten\\_Bilder.html](http://www.capsandiego.de/Uebernachten/Uebernachten_Bilder.html)).

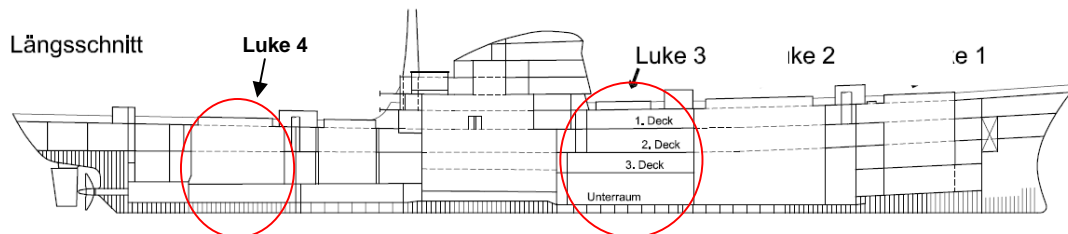
## 3.) Conference Location

The industrial exhibition will take place in hatch 3 (Luke 3), 2<sup>nd</sup> and 3<sup>rd</sup> deck. If necessary it might be extended to hatch 4 where the poster session is situated. A sketch of the Cap San Diego is shown below:

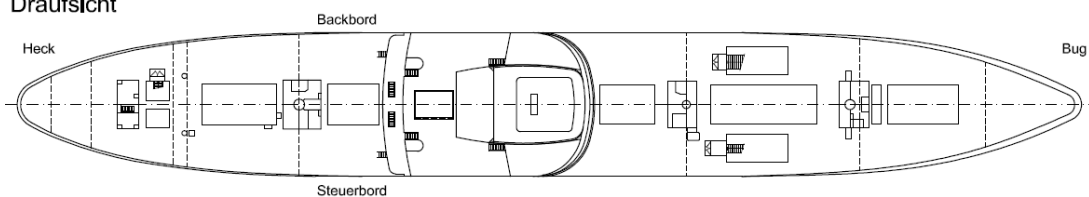
Luke 4

**Poster (Industry)**

1. Deck    **Proceedings and Internet**  
2. Deck    **Coffee breaks and Industry**  
3. Deck    **Coffee breaks and Industry**  
Unterraum    **Auditorium**



Draufsicht



The industrial booths are completely integrated in the conference location: the auditorium will be in the lower deck of hatch 3, and coffee breaks and lunch will be served close to the industrial exhibition in deck 2 and 3. Therefore everybody coming from the auditorium and going for a coffee or for lunch will pass the exhibition area.

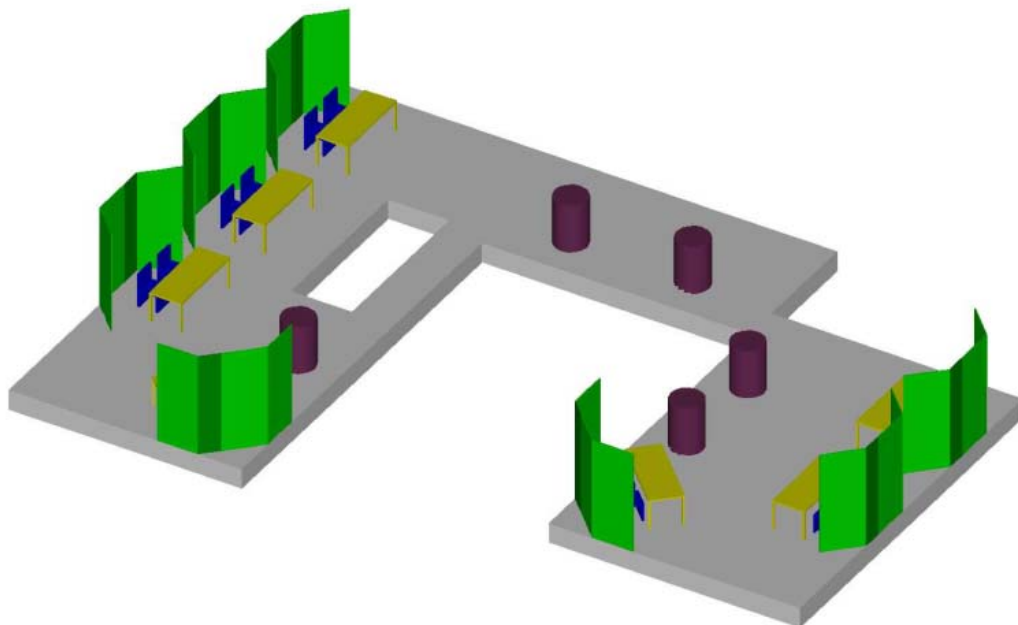
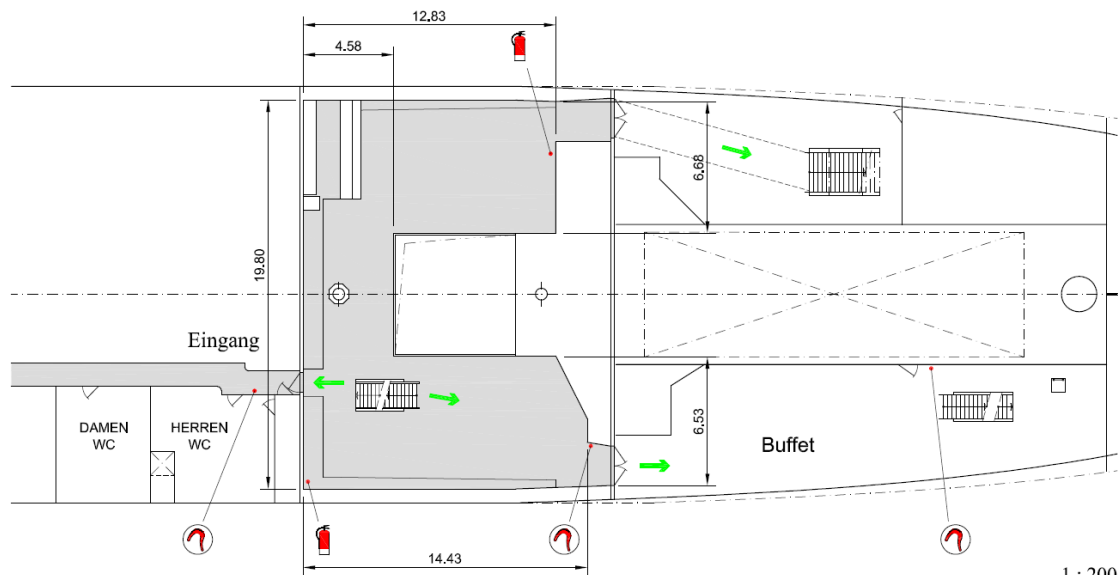
In the following the booth floor plans for both decks are shown. Minor changes in the arrangement of the booths are still possible!

## Deck 2

M. S. CAP SAN DIEGO

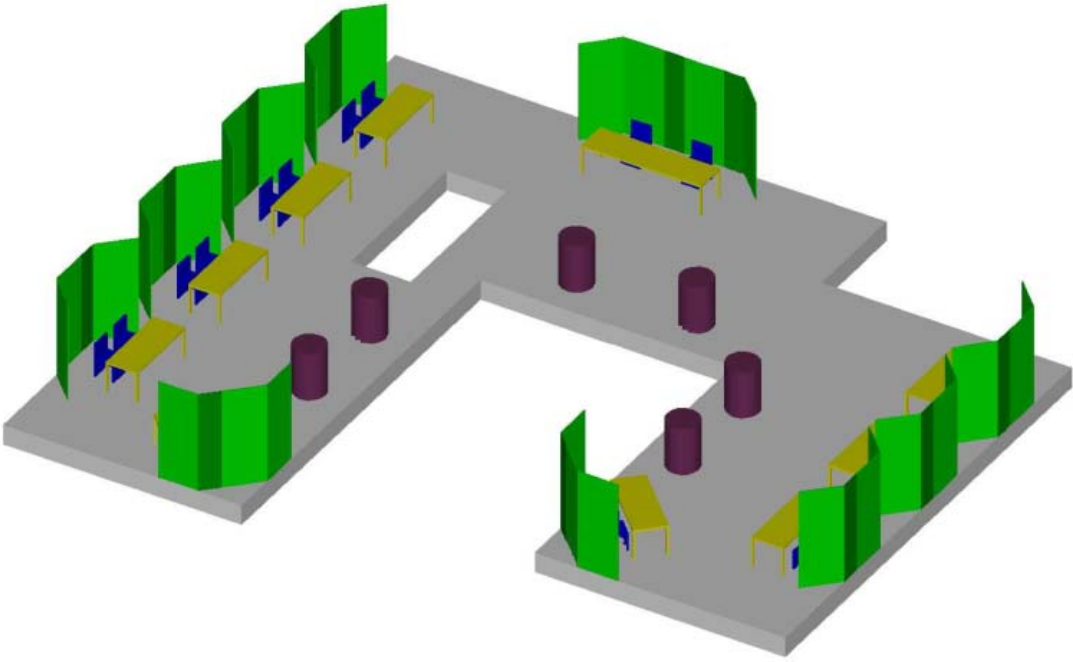
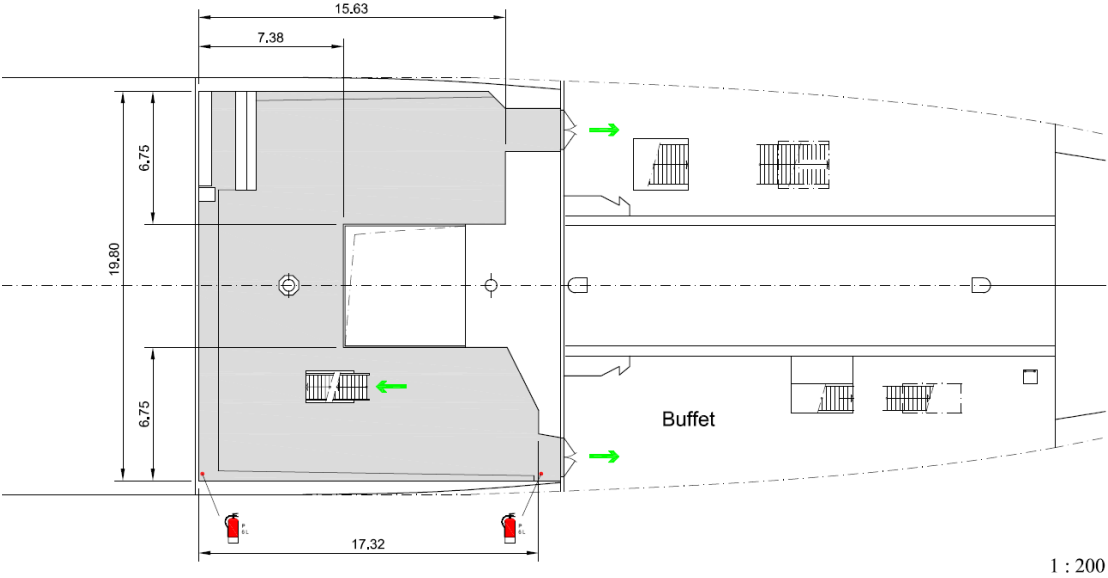
Luke 3

2. Deck



Deck 3

M. S. CAP SAN DIEGO  
Luke 3                      3. Deck



#### **4.) Booths for Industrial Exhibition**

The booths have a footprint of about 5 m<sup>2</sup> (length 2.9 m). They will consist of a movable wall similar to the one depicted below and are equipped with



- table (1.6 m x 0.8 m) and two chairs
- light for illumination
- 3 x 230 V supply voltage (EU compatible)  
Total power consumption ca. 500 W
- 1 x Ethernet connection

In addition, round posser tables will be placed on deck 2 and 3 which can be used for discussions with customers.

For questions concerning the booth equipment please do not hesitate to contact me (email: [gero.kube@desy.de](mailto:gero.kube@desy.de)).

#### **5.) Time Schedule**

The booths will be installed on Sunday 15<sup>th</sup> of May. We expect that they will be ready to move in around midday or early afternoon. Registration of the participants will start at

about 4 p.m. together with a welcome drink (for this event we are still seeking for a sponsor – any support from industry will be appreciated!).

The industrial exhibition takes place Monday 16 and Tuesday 17 of May. Monday the booths should be attended from 9 a.m. until 6 p.m., Tuesday from 9 a.m. until 5 p.m. The exhibitors should start to remove their equipment on Tuesday at about 5 p.m. in the time slot between the end of the poster session and the beginning of the conference dinner.

However, the booths themselves will be dismantled Wednesday 18<sup>th</sup> of May at about 6 p.m.

For further information the general conference time table can be found following the link <http://dipac2011.desy.de/e101061/>.

## **6.) General Terms**

- Booths will be assigned on the basis of “first-come-first-served”. However, before moving in a booth on Sunday 15<sup>th</sup> of May the company representative should contact me aboard the Cap San Diego. I will allocate the booth for him.
- The exhibitors will take care of their rented booth during the conference.
- During exhibition opening hours, booths must be attended by persons technically qualified to explain and demonstrate the equipment or services displayed.
- **Safety:** The use of dangerous or inflammable materials is forbidden.
- Below the deck of the ‘Cap San Diego’ there will be no access to UMTS, but we will provide WiFi and Ethernet cable to access the WWW.